

## NEW NATIONAL THEATRE, TOKYO 2019/2020 SEASON

### BALLET & DANCE THE NATIONAL BALLET OF JAPAN

New National Theatre, Tokyo (NNTT) announced the 2019/2020 Ballet & Dance Season, the final season under the Artistic Director, **Noriko OHARA**, which features 38 performances of 6 ballet works including 5 full-length narrative ballet, and 11 performances of 3 dance pieces.

#### ● The Final Season for Noriko OHARA as Artistic Director of Ballet and Dance at the New National Theatre, Tokyo

Noriko OHARA became the Ballet Mistress of the company in 1999, Assistant Director in 2010 before assumed office as the Artistic Director in September 2014. During these 20 years ever since the company was founded, she has nurtured and led the dancers for The National Ballet of Japan to become the leading company in Japan. This season's line-up sums up this company's best works thus far.

The season will open in October with Kenneth MACMILLAN's "*Romeo and Juliet*", an exemplar of the dramatic ballet tradition. This will be followed by "*Manon*" in February and March. Both works will showcase the company's expressive richness and depth. Christmas season will feature Wayne EAGLING's "*The Nutcracker and the Mouse King*". Technically a very demanding piece, this dreamy fairy tale has real visual appeal which audiences of all ages will enjoy. Then, our "*New Year Ballet*" will feature what has been called "music for the eyes" in the form of George BALANCHINE's "*Serenade*", as well as pas de deux from "*Raymonda*" and "*Le Corsaire*". We will also present a new one-act ballet "*DGV (Danse à Grand Vitesse)*" choreographed by Christopher WHEELDON. We are pleased to add this piece to our repertoire following "*Alice's Adventures in Wonderland*©" by the same choreographer, who is one of today's most popular and talented artist in the ballet world. In May, we will be performing "*Don Quixote*", which has been very popular ever since it was first performed in 1999. We will close the season in June with a reprise of WHEELDON's "*Alice's Adventures in Wonderland*©", a celebrated piece that demands much of the dancers in terms of expressiveness and technique.

As for our Dance productions, for the opening of the Season in November, we will present "*Beethoven Sonata*", a collaborative work between The National Ballet of Japan and **Megumi NAKAMURA** that received critical acclaim in the 2017 when it had its world premiere. In March, we will stage the "*DANCE to the Future 2020*" choreographed by dancers from the National Ballet. In June, we will be performing "*Alice's Adventures in Wonderland*" by **Shuji ONODERA** of Company Derashinera, a piece that could be enjoyed by the whole family.

## NNTT BALLET 2019/2020 SEASON AT A GLANCE

----- 6 Productions including 5 Full-Length Narrative Ballets -----

### ROMEO AND JULIET

**19, 20, 24, 26, 27 October 2019**

Music: Sergei PROKOFIEV  
Choreography: Sir Kenneth MACMILLAN  
Set & Costume: Paul ANDREWS  
Lighting: SAWADA Yuji  
Conductor: Martin YATES  
Orchestra: Tokyo Philharmonic Orchestra



Romeo and Juliet  
(Photographed by Hidemi SETO)

### THE NUTCRACKER AND THE MOUSE KING

**14, 15, 17, 21, 22 December 2019**

Music: Pyotr Ilyich TCHAIKOVSKY  
Choreography: Wayne EAGLING  
Set Design: KAWAGUCHI Naoji  
Costume: MAEDA Ayako  
Lighting: SAWADA Yuji  
Conductor: Alexei BAKLAN  
Orchestra: Tokyo Philharmonic Orchestra  
Chorus: The Little Singers of Tokyo



The Nutcracker and the Mouse King  
(Photographed by Takashi SHIKAMA)

### NEW YEAR BALLET

**11, 12, 13 January 2020**

#### <SERENADE>

Music: Pyotr Ilyich TCHAIKOVSKY  
Choreography: George BALANCHINE

#### <PAS DE DEUX FROM RAYMONDA & LE CORSAIRE>

Music: Alexandr GLAZUNOV (Raymonda)  
Riccardo DRIGO (Le Corsaire)  
Choreography: Marius PETIPA

#### <DGV Danse à Grande Vitesse> **[New Production]**

Music: Michael NYMAN  
Choreography: Christopher WHEELDON  
Set & Costume: Jean-Marc PUISSANT  
Lighting: Jennifer TIPTON

Conductor: Martin YATES  
Orchestra: Tokyo Symphony Orchestra



Serenade © The George Balanchine Trust  
(Photographed by Hidemi SETO)

## MANON

**22, 23, 26, 29 February, 1 March 2020**

Music: Jules MASSENET  
Choreography: Sir Kenneth MACMILLAN  
Set & Costume: Peter FARMER  
Lighting: SAWADA Yuji  
Conductor: Martin YATES  
Orchestra: Tokyo Symphony Orchestra



Manon  
(Photographed by Hidemi SETO)

## DON QUIXOTE

**2, 3, 4, 5, 9, 10 May 2020**

Music: Léon MINKUS  
Choreography: Marius PETIPA/ Alexandr GORSKY  
Production: Alexei FADEECHEV  
Set & Costume: Vyacheslav OKUNEV  
Lighting: KAJI Kozo  
Conductor: Alexei BAKLAN  
Orchestra: Tokyo Philharmonic Orchestra



Don Quixote  
(Photographed by Hidemi SETO)

## ALICE'S ADVENTURES IN WONDERLAND ©

**5, 6, 7, 13, 14 June 2020**

Music: Joby TALBOT  
Choreography: Christopher WHEELDON  
Set & Costume: Bob CROWLEY  
Scenario: Nicholas WRIGHT  
Lighting: Natasha KATZ  
Projection: Jon DRISCOLL and  
Gemma CARRINGTON  
Puppetry: Toby OLIE  
Magic Consultant: Paul KIEVE  
Conductor: Nathan BROCK / TOMITA Misato  
Orchestra: Tokyo Philharmonic Orchestra  
Co-Production with The Australian Ballet



Alice's Adventures in Wonderland©  
(Photographed by Takashi SHIKAMA)

## NNTT DANCE 2019/2020 SEASON AT A GLANCE

----- 3 Productions in Total -----

### Nakamura Megumi “BEETHOVEN SONATA”

**30 November, 1 December 2019**

Choreography: NAKAMURA Megumi

Music: Ludwig van BEETHOVEN

Lighting: ADACHI Hisashi

Set Design: SEYAMA Yoko

Costume: YAMADA Izumi

Music Advisor: NOZAWA Mica

Sound: UCHIDA Makoto

Performance: SHUTO Yasuyuki

The National Ballet of Japan



Nakamura Megumi “Beethoven Sonata”  
(Photographed by Takashi SHIKAMA)

### DANCE TO THE FUTURE 2020

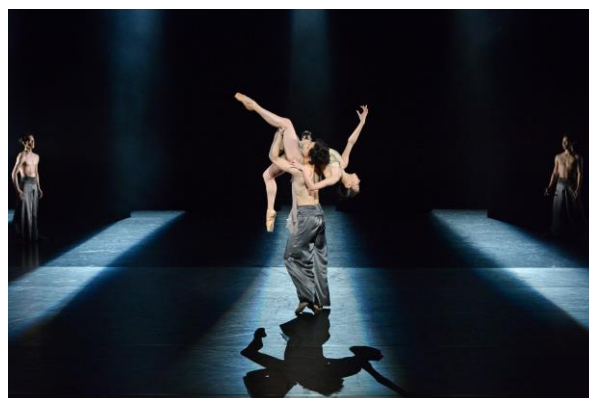
**NBJ Choreographic Group**

**27, 28, 29 March 2020** [ New Production ]

Choreography and Performance:

The National Ballet of Japan

Advisor: ENDO Yasuyuki



“Immortals” from Dance to The Future 2016 Autumn  
(Photographed by Takashi SHIKAMA)

### Onodera Shuji Company derashinera

**“ALICE’S ADVENTURES IN WONDERLAND”**

**20, 21, 26, 27, 28 June 2020**

Direction & Choreography: ONODERA Shuji

Music Advisor: IKEDA Nobu

Sound: KURONO Hisashi

Lighting: YOSHIMOTO Yukiko

Set Designer: ISHIGURO Takeshi

Costume: IMAMURA Azusa

Text: YAMAGUCHI Akane

Performance: Company Derashinera



Onodera Shuji Company derashinera  
“Alice’s Adventures in Wonderland”  
(Photographed by Takashi SHIKAMA)

## NORIKO OHARA, Artistic Director of the National Ballet of Japan

Noriko OHARA trained under Tachibana Akiko from the age of four, and after graduating from the Tachibana Ballet Academy, she entered the Tachibana Ballet. In 1956, at the age 18, she joined the then newly founded Asami Maki Ballet Tokyo as a Principal Dancer. In 1971, she moved to New York to further her professional training and in 1974, she relocated to London to join **New London Ballet**, and from there accepted an invitation from Dame Beryl Grey to join **London Festival Ballet (now English National Ballet)**. After one season with London Festival Ballet, she was invited by Peter Darrell, Artistic Director of **Scottish Ballet**, to join the company as Principal Dancer. This was an



association that lasted more than 20 years. With the Scottish Ballet, she danced all the major roles in the classical repertoire including “Swan Lake”, “Nutcracker”, “Coppelia”, “Giselle” and “La Sylphide”. She also performed new works created by Peter Darrell including “Cheri”, “Cinderella”, “Carmen” and “Tales of Hoffmann”, as well as works by John Cranko, Jiri Kylian, Robert North, Jack Carter and Andre Prokovsky.

In 1999, she became Ballet Mistress of **New National Theatre Ballet (now National Ballet of Japan)**, and from 2010 she worked closely with David Bintley as Assistant Director of Ballet. In September 2014, she assumed office as the theatre’s Artistic Director of Ballet & Dance.

## Introducing Principal Dancers of the National Ballet of Japan

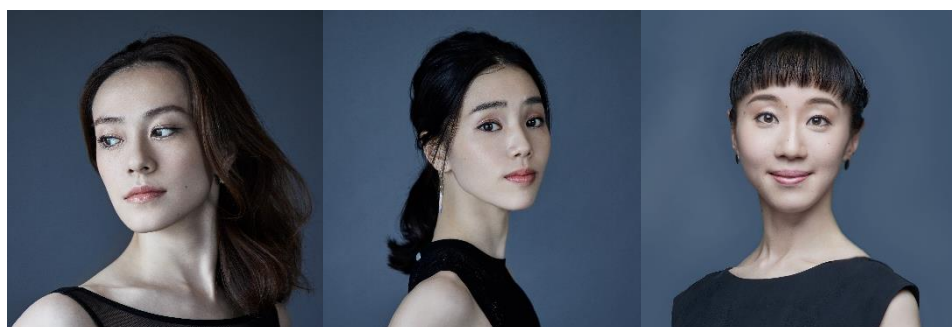


Yudai FUKUOKA

Shun IZAWA

Kosuke OKUMURA

Hideo SUGANO



Miwa MOTOJIMA

Ayako ONO

Yui YONEZAWA

## ABOUT THE NEW NATIONAL THEATRE, TOKYO

The New National Theatre, Tokyo (NNTT) is Japan's only national theatre dedicated to the performing arts of **Opera, Ballet, Dance and Drama**. Since we opened in 1997, the NNTT has presented world-class performances not only at our theatre in Tokyo but also at many regional theatres, and has come to occupy a familiar and much-loved place in the nation's cultural life.



Opera House

The NNTT comprises the **Opera House** (1814 seats; known as Opera Palace), **Playhouse** (1038 seats) and **The Pit** (open space theatre with flexible seating arrangements up to 468 seats), each of which uniquely contributes to an annual total of about 300 stage performances to the delight of approx. 200,000 theatregoers, including many visitors from overseas. The theatre is constantly active in staging productions, by itself or in collaboration with other theatres throughout Japan and overseas.

**New National Theatre Chorus** and **The National Ballet of Japan** are the two resident companies of the NNTT. NNT Chorus inaugurated since the 1998/1999 Season performs in most of the opera productions produced by NNTT. Their activities go beyond operatic performances while they also appear at other concert halls and music festivals and performs in concerts with symphony orchestra. Meanwhile, the National Ballet of Japan (NBJ) was founded in 1997 as the first ballet company in Japan resident of a Theatre. NBJ's repertoire is broad in scope, embracing classics such as "Swan Lake", "The Sleeping Beauty", "The Nutcracker" and works by choreographers such as George BALANCHINE, Roland PETIT, Kenneth MACMILLAN, Frederic ASHTON and David BINTLEY.

The NNTT is also involved in **educational programmes** for high school students for their first time opera, ballet for children, free lectures, talk sessions and workshops, and other initiatives to provide people the opportunities to encounter the art forms they have not been exposed to before.

Also, training young artists and personnel involved in the performing arts is equally important for the NNTT and we have **Opera Studio, Ballet School** and **Drama School** within the theatre complex, hoping that the graduates will take these arts forms forward into the future.

As Japan's foremost national theatre/opera house, New National Theatre Tokyo strives to create, promote and disseminate performing arts of the highest achievement to the public, in a way that inspires and engage with people on the emotional level. In doing so, we strive to be a full and enriching presence, and to this end we look to your support and partnership.