



PRESS RELEASE



THE SUMIDA HOKUSAI MUSEUM

2-7-2 Kamezawa, Sumida-ku, Tokyo, 130-0014
<https://hokusai-museum.jp>

Sumida Hokusai Museum in Tokyo Hold *Ukiyo-e* Exhibition, December 15, 2022 - February 26, 2023.

TOKYO, December 2nd, 2022 / The Sumida Hokusai Museum

Japanese Art: Ukiyo-e



企画展 Special Exhibition

北斎かける 百人一首

Hokusai
at Play with
the 100 Poems

2022 12/15 木 - 2023 2/26 日



Hokusai at Play with the 100 Poems!

The Sumida Hokusai Museum in Tokyo will hold *Ukiyo-e* (woodblock prints) exhibition, **Hokusai at Play with the 100 Poems**, December 15, 2022 - February 26, 2023. This exhibition focuses on Hokusai's *One Hundred Poems Explained by a Nurse*, joined by a wide range of other *ukiyo-e* works of art related to *One Hundred Poets*, *One Hundred Poems*, in introducing that anthology. You will enjoy these *ukiyo-e* works, in which the powers of *One Hundred Poets*, *One Hundred Poems* and of Hokusai cross-fertilize and multiply.

Hokusai at Play with the 100 Poems

Term: December 15, 2022 - February 26, 2023

First-term: Dec 15, 2022 - Jan 22, 2023

Second-term: Jan 24, 2023 - Feb 26, 2023

Open : Tuesday - Sunday 9:30-17:30 (Last admission 17:00)

Closed: Mondays

New Year holidays: December 29 - January 1

*Open: Mon, Jan 2 / Tue, Jan 3 / Mon, Jan 9, 2023

*Closed: Wed, Jan 4 / Tue, Jan 10, 2023

Organizers: Sumida City, The Sumida Hokusai Museum

Official Exhibition Website:

<https://hokusai-museum.jp/100PoemsEN/>




北斎かける
百人一首 Hokusai
at Play with
the 100 Poems

2022 12/15 木 - 2023 2/26 日

前期 12月15日(木) - 1月22日(日)
後期 1月24日(火) - 2月26日(日)

※自費精製一冊贈呈(要申込)

開館時間 9:30-17:30 (入館は17:00まで)
休館日 毎週月曜日、年末年始(12月31日・1月1日)
※開館時間・休館日・入館料は変更の可能性があります
主催：東京都・すみだ市文化振興局

Exhibition Highlights

Pick Up ► Hokusai's *One Hundred Poems Explained by a Nurse*, his last series in the *oban nishiki-e* format.

The Sumida Hokusai Museum's collection of *One Hundred Poems Explained by a Nurse* series will be exhibited with twenty-three paintings in the first and second halves of this exhibition !



Katsushika Hokusai, *Ono no Komachi*, from the series *One Hundred Poems Explained by a Nurse*, The Sumida Hokusai Museum (1st term)

Around 1835, plans were made for a series of prints, *One Hundred Poems Explained by a Nurse*. In what became Hokusai's last series in the *oban nishiki-e* format, twenty-seven prints were published. The difficulty of interpreting the pictures Hokusai created for the series, among other reasons, led to only twenty-seven of the planned one hundred prints being published.

Exhibition Overview

One Hundred Poets, *One Hundred Poems*, an anthology of *waka* poems compiled in the thirteenth century, had become a standard part of general education by the mid-Edo period. Moreover, those *waka* share the same format as the satirical *kyōka* poems then popular and also share their use of parodies and analogies; those similarities helped the anthology gain even greater presence in that period. That social context inspired the idea of creating pictorial explanations of the poems in a way that anyone could understand. The result was Hokusai's *One Hundred Poems Explained by a Nurse*, his last series in the *oban nishiki-e* format. Hokusai, expressing his unique worldview, had included his own ideas in these prints as well as the usual traditions about the poems and poets and the conventional images associated with them.

► About Katsushika Hokusai



Keisai Eisen, *Hokusai portrait*,
National Diet Library

Japanese *Ukiyo-e* artist Katsushika Hokusai (1760-1849) was born in Sumida, Tokyo. It is said that Hokusai moved more than 90 times during his 90-year life, spending most of his lifetime in Sumida, and left many works depicting the scenery of Sumida, including Ryogoku Bridge, Mimeguri Shrine, and Ushijima Shrine. He vividly captured life in the Edo Period and is best known for the series “*Thirty-six Views of Mount Fuji*” which includes representative Japan’s most iconic artwork “*Under the Wave off Kanagawa*”, known internationally as *The Great wave*. His fascinating life and varied works spanning more than 70 years are more highly regarded today than ever, 160 years after his death. Today, he and his works are in the limelight as one of the most acclaimed artists in the world.

► About Museum



The Sumida Hokusai Museum is a “growing museum”.
The museum provides information about Hokusai to the local community and the world

Open : Tuesday - Sunday

9:30-17:30 (Last admission 17:00)

Closed : Mondays

(or the following day if it is a national holiday)

New Year holidays: December 29 - January 1

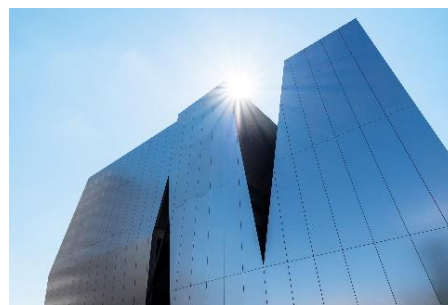
Address : 2-7-2 Kamezawa, Sumida-ku, Tokyo, 130-0014

Tel : 03-6658-8936

Official website: <https://hokusai-museum.jp/>

Facebook: <https://www.facebook.com/THE.SUMIDA.HOKUSAI.MUSEUM/>

Twitter: <https://twitter.com/HokusaiMuseum>



► Request of Visitors Cooperation COVID-19 Infection Prevention

Visitor Guidelines : Health and Safety During Your Visit for Keeping us All Safe

<https://hokusai-museum.jp/modules/Topic/topics/view/961?lang=en>

Please check before your visit.

For more information and images

Contact: Museum Public Relations, Yumiko Hayashi

E-Mail : hayashi-yumiko@hokusai-museum.jp